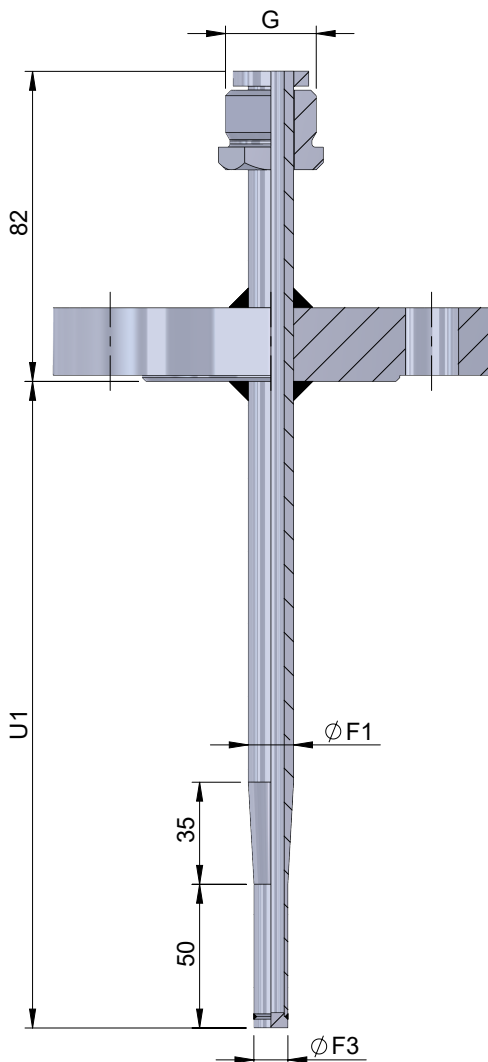


# Schutzrohr Form 3F - DIN 43772 | Thermowell 3F - DIN 43772

Schutzrohr zum Anflanschen mit verjüngter Spitze für eine schnelle Ansprechzeit.  
Das Schutzrohr ist aus nahtlosem Rohr. Die Maße sind in der DIN 43772 festgelegt.

Flange Thermowell with stepped tip for a fast response time. The Thermowell is made from seamless pipe material. Measures are acc. to DIN43772.



|  |          |           |          |             |          |          |   |           |           |
|--|----------|-----------|----------|-------------|----------|----------|---|-----------|-----------|
| <b>Flansch   Flange</b>  |          |           |          |             |          |          |   |           |           |
| <b>D (DIN EN 1092-1)</b>   |          |           |          |             |          |          |   | <b>01</b> |           |
|  | <b>A</b> | <b>B</b>  | <b>C</b> | <b>D</b>    | <b>E</b> | <b>F</b> |   | <b>02</b> |           |
| DN   | 20       | 25        | 40       | 50          | 80       | 100      |   |           |           |
| PN   | 6        |           |          |             |          |          | 1 | <b>03</b> |           |
|  | 40       |           |          | -----       |          |          | 2 |           |           |
|  | -----    |           |          | 16          |          |          | 3 |           |           |
|  | -----    |           |          | 40          |          |          | 4 |           |           |
|  | 63       |           |          |             |          |          | 5 |           |           |
|  | 100      |           |          |             |          |          | 6 |           |           |
| Andere (bitte angeben)   Other (please specify)                          |          |           |          |             |          |          | C |           |           |
| Dichtfläche<br>Sealing surface   |          | B1        |          |             |          |          | X | <b>04</b> |           |
|  |          | C (Feder) |          |             |          |          | Y |           |           |
|  |          | D (Nutm)  |          |             |          |          | Z |           |           |
| <b>A (ASME B16.5)</b>  |          |           |          |             |          |          |   | <b>01</b> |           |
|  |          | <b>B</b>  | <b>C</b> | <b>D</b>    | <b>E</b> | <b>F</b> |   | <b>02</b> |           |
| Size   |          | 1"        | 1 1/2"   | 2"          | 3"       | 4"       |   |           |           |
| Class  | 150      |           |          |             |          |          | 1 | <b>03</b> |           |
|  | 300      |           |          |             |          |          | 2 |           |           |
|  | 600      |           |          |             |          |          | 3 |           |           |
|  | -----    |           |          | 900         |          |          | 4 |           |           |
|  | 1500     |           |          |             |          |          | 5 |           |           |
| Andere (bitte angeben)   Other (please specify)                          |          |           |          |             |          |          | C |           |           |
| Dichtfläche<br>Sealing surface   |          | FF        |          |             |          |          | X | <b>04</b> |           |
|  |          | RF        |          |             |          |          | Y |           |           |
|  |          | RTJ       |          |             |          |          | Z |           |           |
| <b>Eintauchtiefe - Gesamtlänge   Immersion length - Overall length</b>   |          |           |          |             |          |          |   |           |           |
| 225 mm   |          |           |          | 307 mm      |          |          | 1 | <b>05</b> |           |
| 315 mm   |          |           |          | 397 mm      |          |          | 2 |           |           |
| 465 mm   |          |           |          | 547 mm      |          |          | 3 |           |           |
| Andere (bitte angeben)   Other (please specify)                          |          |           |          |             |          |          | C |           |           |
| <b>Rohr   Pipe Ø F1</b>  |          |           |          | <b>Ø F3</b> |          |          |   |           |           |
| 12 x 2,5 mm  |          |           |          | 9 mm        |          |          |   | 1         | <b>06</b> |
| 14 x 2,5 mm  |          |           |          | 11 mm       |          |          |   | 2         |           |
| Andere (bitte angeben)   Other (please specify)                          |          |           |          |             |          |          | C |           |           |
| <b>Anschlussgewinde G   Connection thread G</b>                          |          |           |          |             |          |          |   |           |           |
| M24 x 1,5  |          |           |          |             |          |          | 1 | <b>07</b> |           |
| G 1/2"   |          |           |          |             |          |          | 2 |           |           |
| 1/2" NPT   |          |           |          |             |          |          | 3 |           |           |
| Andere (bitte angeben)   Other (please specify)                          |          |           |          |             |          |          | C |           |           |
| <b>Schutzrohr Werkstoff   Thermowell Material</b>                        |          |           |          |             |          |          |   |           |           |
| 1.4571 A182 Grade F316Ti   |          |           |          |             |          |          | 1 | <b>08</b> |           |
| 1.4404 A182 Grade F316L  |          |           |          |             |          |          | 2 |           |           |
| 1.4539 A182 Grade F904L  |          |           |          |             |          |          | 3 |           |           |
| anderer Wst. (siehe Liste)   different Mat. (please refer material list) |          |           |          |             |          |          | C |           |           |
| <b>Prüfungen, Abnahmen etc.   Options</b>                                |          |           |          |             |          |          |   |           |           |
| Materialprüfzeugnis   Material certificate EN10204 3.1                   |          |           |          |             |          |          | 1 | <b>09</b> |           |
| Farbeindringprüfung   Dye Penetration Test                               |          |           |          |             |          |          | 2 |           |           |
| Druckprüfung (außen)   Pressure Test (external)                          |          |           |          |             |          |          | 3 |           |           |
| Röntgenprüfung   X-Ray Test  |          |           |          |             |          |          | 4 |           |           |
| Schutzrohrberechnung   Strength Calculation                              |          |           |          |             |          |          | 5 |           |           |
| Andere (bitte angeben)   Other (please specify)                          |          |           |          |             |          |          | C |           |           |
| Keine   None   |          |           |          |             |          |          | K |           |           |

|       |    |    |    |    |    |    |    |    |
|-------|----|----|----|----|----|----|----|----|
| 01    | 02 | 03 | 04 | 05 | 06 | 07 | 08 | 09 |
| SR32. |    |    |    |    |    |    |    |    |